



BFM[®] Bulk Bag Loader

**Inflatable
BFM[®]
seals &
secures**



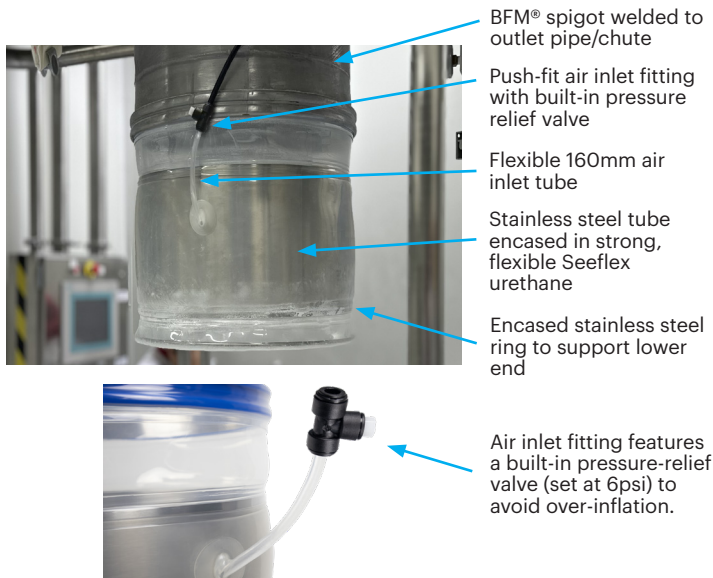
- 100% sealed - no dust leakage
- Strong & durable
- Quick to fit & remove bags
- Safer to use - no pinch points



Clean & efficient bulk bag loading with the BFM® Bulk Bag Loader

Filling bulk bags without leakage is a challenge for any production line, so having an easy to use, fast to change, leak-proof filling head is essential for efficient operations.

BFM® fitting have used our patented spigot and snap-fit connector system to develop a fully sealed, inflatable Bulk Bag Loading head that makes hygienic bag filling a breeze.



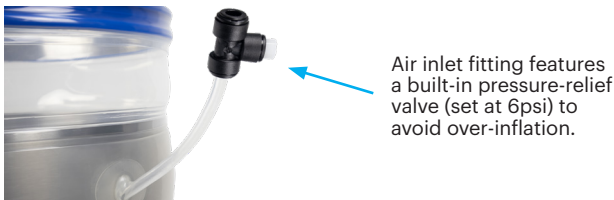
BFM® spigot welded to outlet pipe/chute

Push-fit air inlet fitting with built-in pressure relief valve

Flexible 160mm air inlet tube

Stainless steel tube encased in strong, flexible Seeflex urethane

Encased stainless steel ring to support lower end



Air inlet fitting features a built-in pressure-relief valve (set at 6psi) to avoid over-inflation.



When inflated, the outer Seeflex layer will securely hold the bag neck up and open for clean, efficient filling.

There are no pinch-points to endanger operators hands when fitting the bag.

Can be used with or without plastic liners.

How does it work?

The BFM® Bulk Bag Loader is a three-layered, inflatable filling head that snaps easily into a BFM® spigot welded to your outlet chute. It features a stainless steel central core, fully encased in BFM®'s strong, flexible Seeflex urethane.

The Bulk Bag Loader comes complete with a built-in, flexible air inlet tube and connector that is simply plugged into a standard 8mm pneumatic air-line to inflate the super strong and flexible outer layer.

The superior seal of the BFM® fitting system means that the neck of your bulk bag will be securely held open and there will be no leaks during loading.

Once loading is complete, the outer sleeve can be instantly deflated for easy bag removal.

FEATURES:

- Inner & outer sleeves made from strong Seeflex urethane (3A & EU Compliant)
- Stainless steel core tube (encased by Seeflex sleeve)
- Patented BFM® fitting snap-fit top cuff
- Encapsulated stainless steel ring at lower end
- 160mm flexible air inlet tube, welded to the outer layer and fitted with a T-shaped, push fit air line connector.
- Connector features built-in pressure relief valve to avoid over inflation

THE BFM® ADVANTAGE:

- ✓ Our Seeflex urethane is much stronger, more flexible and durable than silicone/rubber based products that degrade if inflated multiple times
- ✓ 100% seal of the BFM® fitting system is better than anything else in the market (no hoseclamps to leak!)
- ✓ Snap-fit connection makes it faster and easier to take out, clean and replace than any other connector/filling head
- ✓ Quick fitting & removal of bulk bags
- ✓ Safer for workers as there are no pinch-points to catch hands against when pulling up bulk-bag neck
- ✓ USDA approved design

The BFM® Bulk Bag Loader is available in the following standard sizes:

Diameter:	Expands To Fit Bag Neck Sizes:	Part No:
Ø150MM	Ø165 - Ø200mm	305078
Ø200MM	Ø220 - Ø260mm	305075
Ø250MM	Ø270 - Ø340mm	304794
Ø300MM	Ø320 - Ø395mm	304793
Ø350MM	Ø370 - Ø460mm	304791
Ø400MM	Ø420 - Ø540mm	302363
Ø450MM	Ø470 - Ø590mm	304828



The length is standard for all diameters: 330mm (measured from the bottom of the cuff to the end of the steel ring at the bottom of the loader).

THINGS TO KNOW BEFORE INSTALLING:

- You will need to have a BFM® Spigot of the appropriate size attached to your outlet pipe for the BFM® Bulk Bag Loader to snap into (additional to the RRP quoted above).
- A standard 8mm (OD) tube is required for operation.
- **Recommended operating pressure is 3-4PSI (up to a maximum of 6PSI)**
- A foot-controller for the air-line inlet valve is recommended.
- Air-venting still needs to be enabled inside the filling chute.

Go to www.bfmfitting.com for more information, or contact your local BFM® Distributor